



Workbook

Los Banos Pacheco Boulevard Pioneer Road Complete Streets

Thank you for helping to enhance travel in Los Banos!

This workbook has two parts:

1

Seeking your feedback on potential routes connecting Pacheco Boulevard to Pioneer Road and improvements to Pioneer Road itself.

2

Seeking your feedback on potential SR-152/Pacheco Boulevard improvements.

Traffic Flow & Safety – Pacheco Boulevard

Rate on a 1 to 5 scale (1 = Strongly oppose, 5 = Strongly support)

Pacheco Boulevard is highly congested, especially at certain times. It also has the highest rate of collisions in Los Banos. The following questions ask about potential changes that could improve traffic safety, reduce vehicle congestion, or do both simultaneously on Pacheco Boulevard.

1 Change some Two-way Streets near Downtown to One-way Streets.

Some two-way streets could be changed to one-way streets. This would reduce the number of left turn maneuvers at intersections, which could extend the length of the green lights on Pacheco Blvd.

Your rating: 1 2 3 4 5



2 Consider Roundabouts

Roundabouts can reduce delays and improve traffic flow, and can also be safer than traditional signal-controlled intersections. They can be designed to handle truck traffic. However, they require more space than traditional intersections.

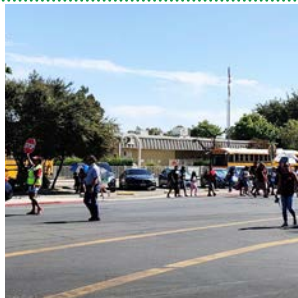
Your rating: 1 2 3 4 5



3 Improve School Drop-off/ Pick-up Procedures

Areas around Westside Union and Los Banos Elementary Schools can be overcrowded during student drop-off or pick-up times. Improvements may include coordinating pick-up/drop-off times between the schools and restricting vehicles that are picking up or dropping off along a designated route.

Your rating: 1 2 3 4 5



4 Speed Reducing Treatments

Lowered speed limits and speed feedback signs can make traffic slower. Narrowed travel lanes can also provide traffic calming.

Your rating: 1 2 3 4 5



5 Speed Enforcement

If possible, increase focus on speed enforcement from California Highway Patrol.

Your rating: 1 2 3 4 5



6 Improved Street Lighting

Many areas along Pacheco Blvd do not have street lights on both sides of the street.

Your rating: 1 2 3 4 5



7 Remove Visual Barriers

Signs or planting near intersections and crossings can reduce drivers' visibility of other vehicles as well as people walking and bicycling.

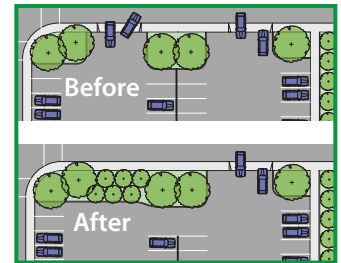
Your rating: 1 2 3 4 5



8 Reduce Driveway Conflict Points

Reducing the number of driveways could speed up travel through the corridor. Removal or consolidation of driveways would sometimes require changes to parking lot configurations.

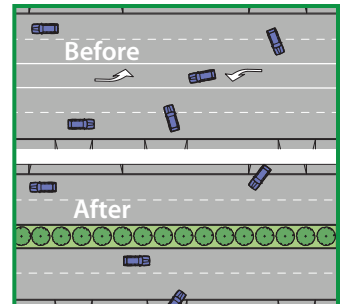
Your rating: 1 2 3 4 5



9 Add Raised Medians to Reduce Left Turns

A center median can reduce safety conflicts by restricting left turns from Pacheco Blvd and restricting left turns for drivers entering the roadway from a driveway. However, medians may sometimes limit access and require motorists to make U-turns to get to a destination on the opposite side of the street.

Your rating: 1 2 3 4 5



10 Is there anything else you'd like to add about traffic safety and/or congestion on Pacheco Boulevard?

2 Streetscape and Urban Design – Pacheco Boulevard

☒ Choose the top three potential improvements you'd like to see.

☐ 1 Landscaped Medians

Center medians with landscaping or other aesthetic features can make Pacheco Boulevard more attractive.



☐ 2 Landscaping and Trees Along the Roadway

Plantings along roadway edges can make the street more attractive and provide shade for pedestrians.



☐ 3 Gateways and Public Art

A gateway sign can introduce and “welcome” visitors to the community. Public art along Pacheco Boulevard can create a unique street environment.



☐ 4 Wayfinding/Directional Signage with a Unified Design

Special signage for drivers, pedestrians and bicyclists can point people to popular destinations.



☐ 5 Active Streetfronts

Buildings that are closer to the street with windows and entrances facing the street can provide an activated street environment that is attractive to people driving by.



☐ 6 Screening of Parking Lots

Landscaping and elements such as screens or trellises can make parking lots less visible from the street, while maintaining visibility to businesses.



☐ 7 Street Furnishing

Amenities such as seating and pedestrian scale lighting, particularly in the central area, can make walking more comfortable.



☐ 8 Enhanced Parks Near and Along Pacheco Boulevard

Los Banos Park could be extended toward Pacheco Boulevard by removing the frontage road, with a new parking lot potentially providing parking.



☐ 9 Other Ideas

What else can make Pacheco Boulevard more attractive for residents and visitors? How do you envision the appearance of Pacheco Boulevard 5-10 years from now?

Many community members have mentioned a desire for safer walking conditions along and crossing Pacheco Boulevard.

1 Enhance Existing Crosswalks

Enhancements such as high-visibility crosswalks and pedestrian refuge islands can improve safety for people crossing the street.



Your rating: 1 2 3 4 5

2 Create New Midblock Crosswalks

New pedestrian crossings can provide places for pedestrians to cross at locations not served by a nearby intersection crosswalk. However, this may decrease traffic flow.



Your rating: 1 2 3 4 5

3 Pedestrian/Bike Overcrossing

Overcrossings allow people to walk or bike across a roadway, but they are expensive to build.



Your rating: 1 2 3 4 5

4 Add New Sidewalks

Adding sidewalks closes gaps in the pedestrian network and increases safety and accessibility for all users.



Missing Sidewalks on Pacheco Blvd



New Sidewalk on Pacheco Blvd

Your rating: 1 2 3 4 5

5 Widen Existing Sidewalks

Wider sidewalks provide additional comfort as well as room for separation from the street.



Existing Sidewalk on Pacheco Blvd




Wider Sidewalks on Badger Flat Rd

Your rating: 1 2 3 4 5

Needed Locations

Please describe any locations where you would like to see improvements.

East-West Options Through the Central Area

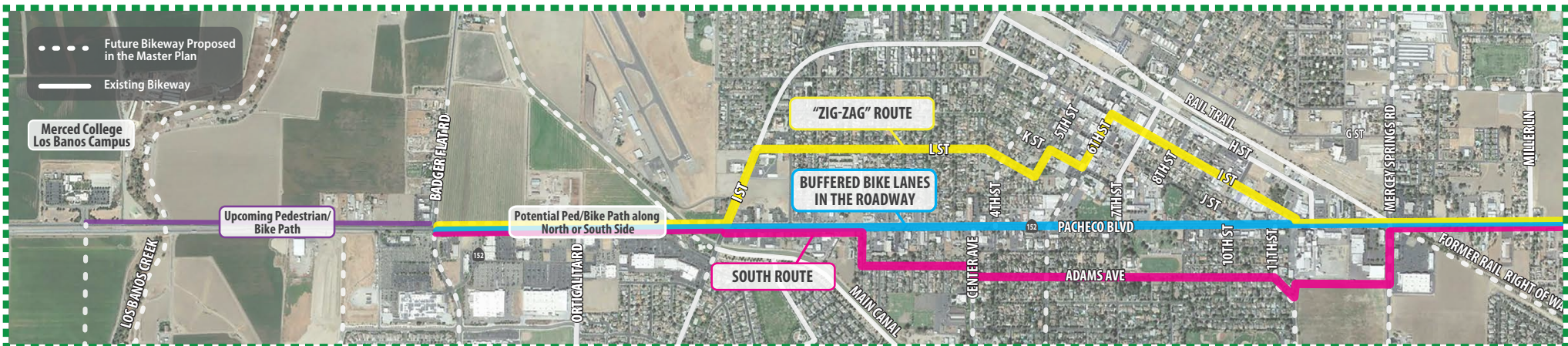
 Choose your preferred route.

Bike routes are important in many ways, such as providing safer conditions for school children and college students wishing to bike to school, as well as supporting bicycling as healthy recreation. They are also a low-cost travel option for people who cannot afford a personal vehicle and/or for whom public transit is inefficient.

INSTRUCTIONS

This map shows **three potential East-West Bicycle Routes** to connect important areas of Los Banos, like the College, residential neighborhoods, and major job and shopping centers.

Please indicate which one of the routes you would like to see first.


☐

"Zig-Zag" Route

Bike lanes along roads north of Pacheco Blvd connecting to Downtown

☐

Pacheco Blvd Bike Lanes

Bike lanes in the roadway, which could be buffered from vehicles

☐

Neighborhood Greenway

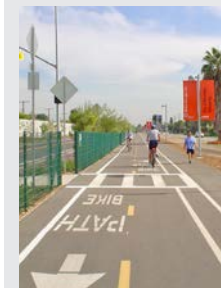
Route to the south of Pacheco Blvd usually sharing the roadway with vehicles

☐

Other (please describe)

Comments?

Types of Bikeways



Shared-Use Path



Cycle Track



Neighborhood Greenway



Bike Lane

INSTRUCTIONS

This map shows **three potential North-South Bicycle Routes** crossing Pacheco Blvd. Please indicate which one of these, and its crossing of Pacheco Blvd, you would like to see completed first.



Los Banos Creek Trail

A route from Merced College to Downtown, utilizing the upcoming shared use path from the College and roadways north of Pacheco.



Canal/West I St

On-street bicycle lanes along SR-152/Pacheco Boulevard in the roadway, which could require reconfiguration of the roadway and shoulders to accommodate bicycles.



Option 3: Rail Trail

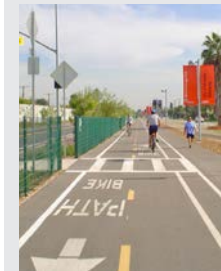
A new bicycle route through the streets south of Pacheco Blvd, including Adams Avenue.



Other (please describe)

Comments?

Types of Bikeways



Shared-Use Path



Cycle Track



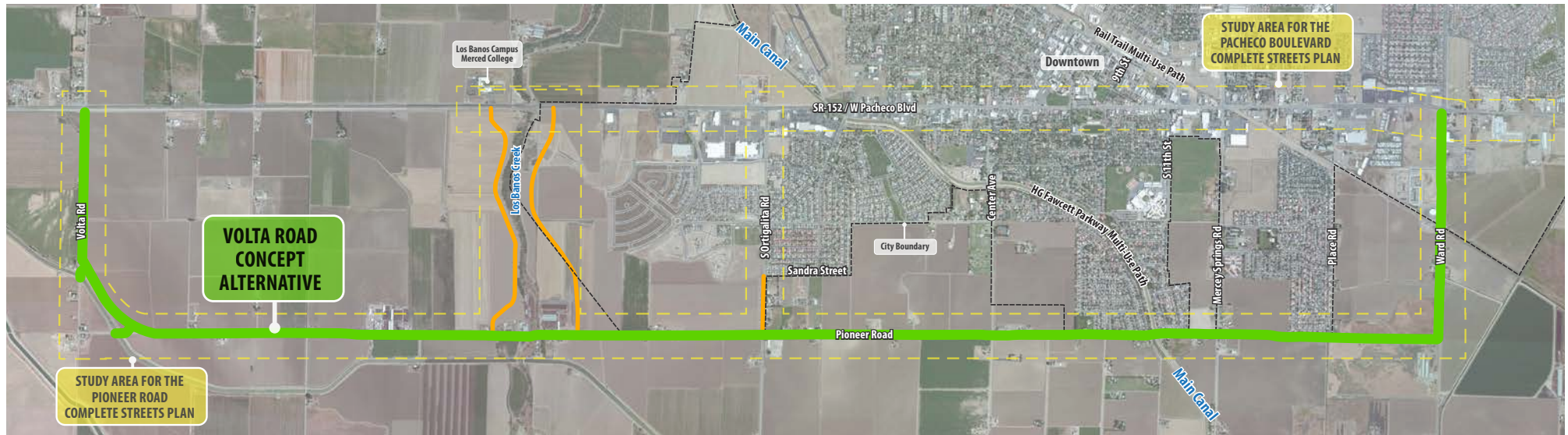
Neighborhood Greenway



Bike Lane

This section seeks feedback on potential roadway enhancements along Pioneer Road as well as potential routes connecting Pioneer Road with Pacheco Blvd. Please review three alternatives presented below. The alternatives show different points of connection on the western end. After reviewing the

alternatives, choose the one you prefer. In all alternatives we are showing Pioneer as an arterial roadway with four travel lanes, a landscaped center median, and a pedestrian/bicycle path.



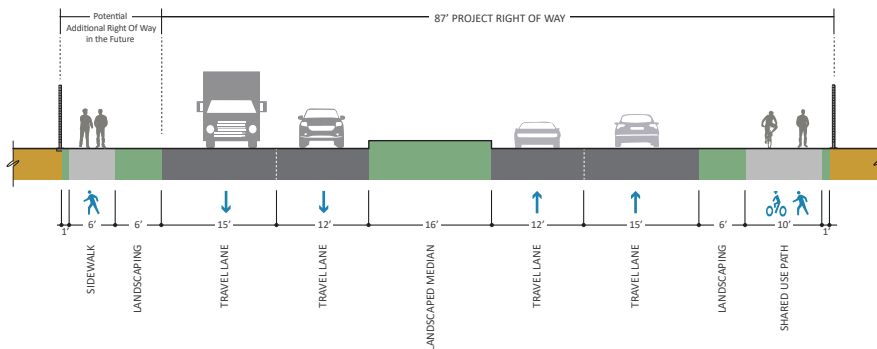
Alternative A

Volta Road to Ward Road

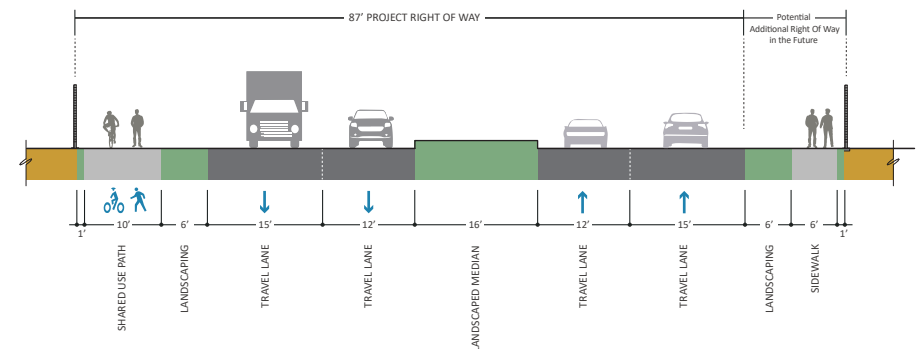
This alternative would enhance existing roadways along Volta Road and Pioneer Road to Ward Road. The intersection with SR-152 at Volta Road would be west of the developed part of Los Banos. To avoid the tight spacing of structures at the intersection of Pioneer Road and Volta Road, the route is shown east of the canal.

One drawback compared to other alternatives is the added cost of extending Pioneer Road two miles west of Los Banos Creek, including a widened bridge at Los Banos Creek.

Volta Road - Looking North (Typical)



Pioneer Road - Looking East (Typical)





Alternative B

Merced College Connection to Ward Road

For this alternative we have two options.

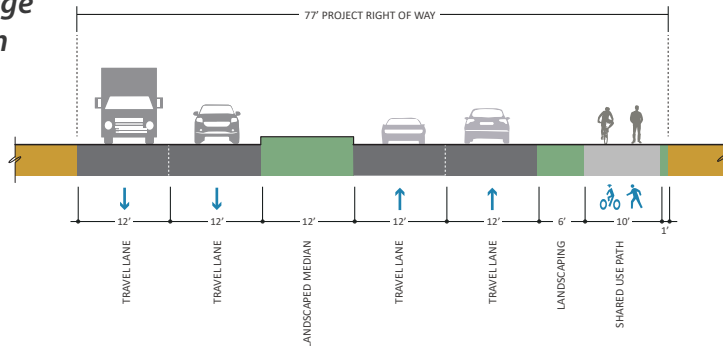
Option B1: West of Los Banos Creek

This option utilizes the existing signalized intersection at Merced College and does not add another signal along SR-152. It could integrate an attractive pedestrian/bicycle path along Los Banos creek. However, it crosses some privately owned active farmland which would require negotiation with private parties. This option also requires a widened bridge across Los Banos Creek.

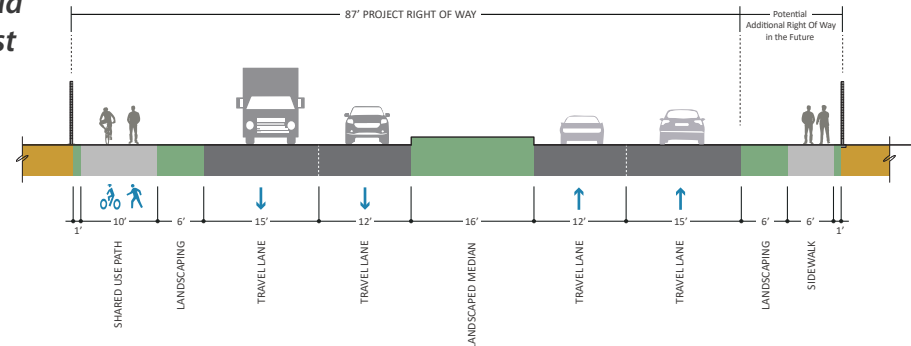
Option B2: East of Los Banos Creek

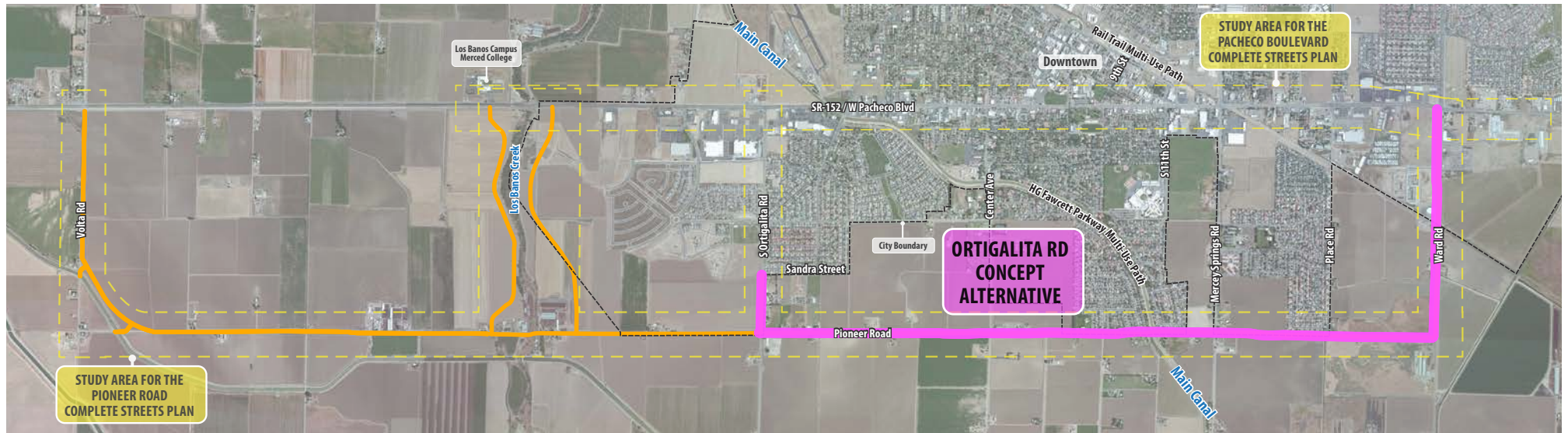
This option would primarily use an already proposed road connection at a future development site to the east of Los Banos Creek. It would add another signalized intersection fairly close to Merced College, but would prevent the need to replace or widen the bridge over Los Banos Creek.

South of College Looking North (Typical)



Pioneer Road Looking East (Typical)



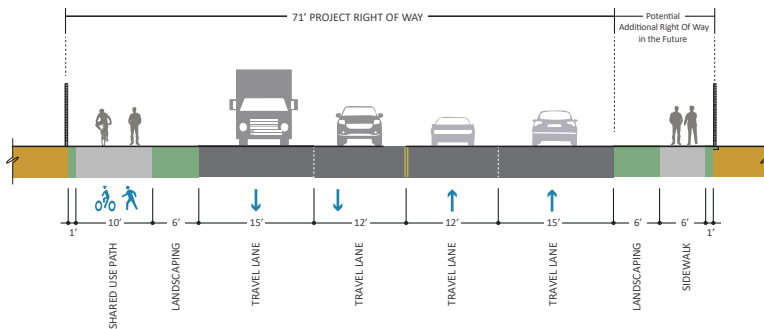


Alternative C Ortogonalita Road

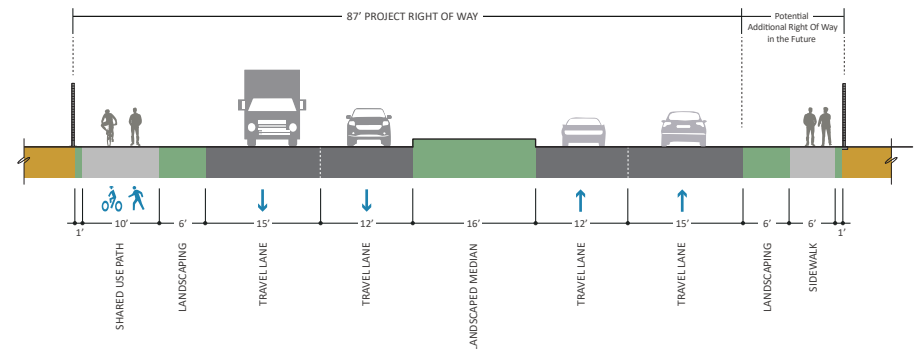
This alternative would connect to existing Ortogonalita Road. Ortogonalita is a 4 lane roadway north of Sandra Street, and the project would need to extend the four lane road to Pioneer Road. Because it is partially developed, it would have limited effects on existing properties, and the cost would be lower than

other alternatives. However, Ortogonalita is within the developed part of Los Banos, and would not have the benefit of the more western alignment of the other alternatives.

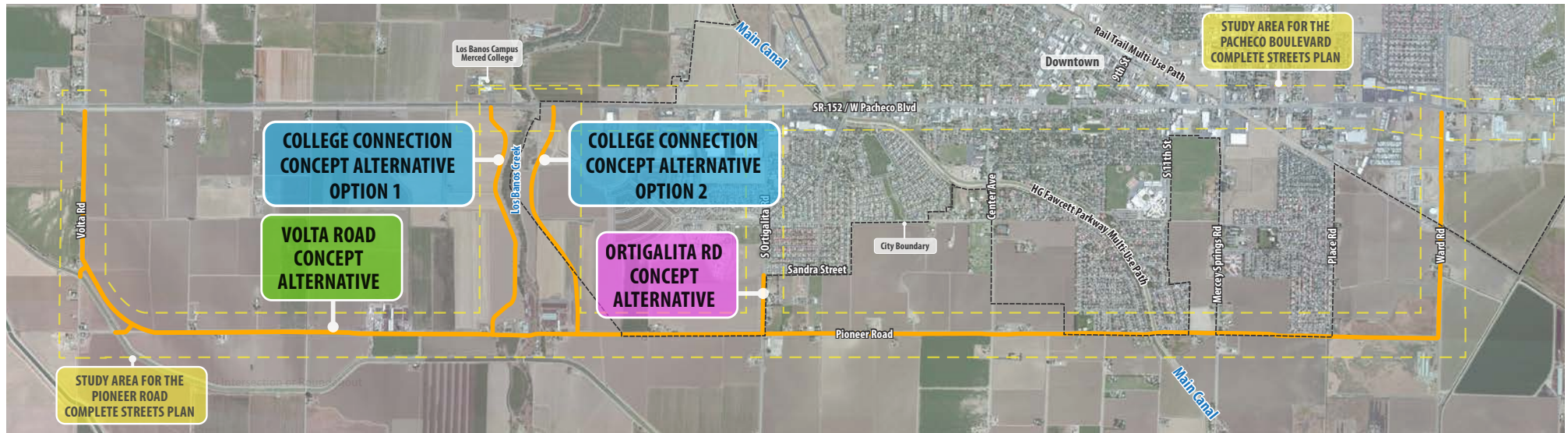
Ortogonalita Road - Looking North (Typical)



Pioneer Road - Looking East (Typical)



Choose Preferred Alternative for Pioneer Road



Please indicate which alternatives you would most like to see analyzed further as a potential future route.

Please mark your first preference with “1” and second preference with “2” in the corresponding box below:

☐

Alternative A

Volta Road to Ward Road

☐

Alternative B, Option 1

**Merced College Connection to Ward Road:
*West of Los Banos Creek***

☐

Alternative B, Option 2

**Merced College Connection to Ward Road:
*East of Los Banos Creek***

☐

Alternative C

Ortigalita Road

General Comments

Please use this page to provide any additional comments you have on the project. Thank you!

