



SR-152 / Pacheco Boulevard

Refined Concepts

Draft

Contents

1. Introduction
2. Improvements to Increase Traffic Flow and Safety
3. Streetscape and Aesthetic Improvements
4. Pedestrian Improvements
5. Bicycle Improvements

www.losbanos2040.org/completestreets

This page intentionally left blank

Introduction

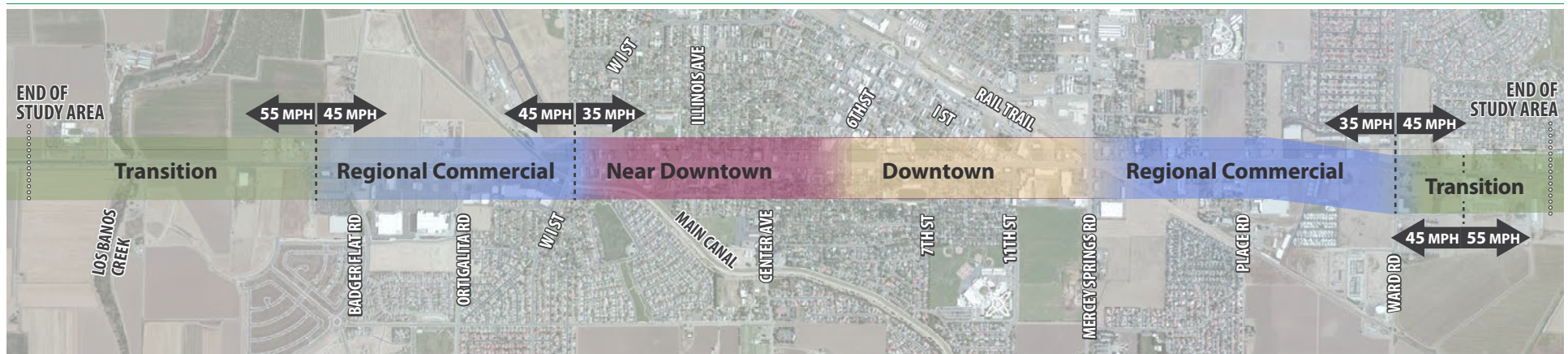
The goal of the SR-152/Pacheco Boulevard Complete Streets project is to enhance Pacheco Boulevard to create a more efficient, safe, and attractive street for people driving, walking, and bicycling. It is funded by a grant from the California Department of Transportation (Caltrans). The project's study area is Pacheco Boulevard from Merced College to the west to just beyond Ward Road to the east.

This Refined Concepts packet presents a set of proposed improvements for Pacheco Boulevard as it runs through the City of Los Banos. The proposed improvements are the result of an extensive outreach process that included two community workshops, several stakeholder meetings, and an online survey.

The outcome of this community outreach helped the project team create the concepts that are presented in this packet. The concepts have been organized into the following sections: Traffic Flow and Safety, Streetscape and Aesthetics, Pedestrian Improvements, and Bicycle Improvements. In some cases, the concepts are shown in phases: as an interim improvement to begin with and a long-term improvement when more funding can be secured over time.

The project team welcomes community input on these concepts! Please fill out the comment sheet at the back of this packet, or email your comments to completestreets@losbanos2040.org.

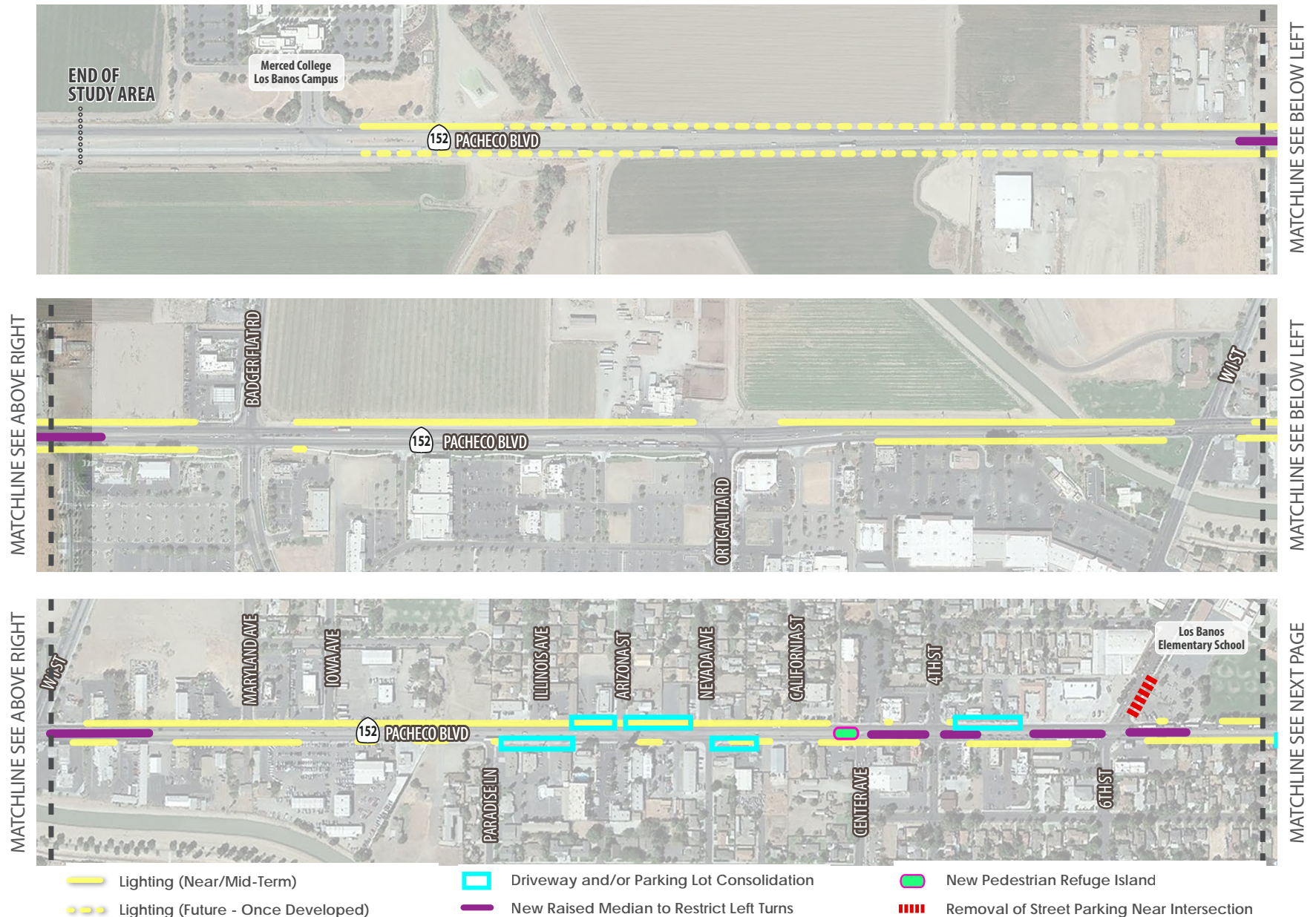
SR-152 / Pacheco Boulevard Speed and Character Zones



Improvements to Increase Traffic Flow and Safety

Pacheco Boulevard is highly congested, especially at certain times. It also has the highest rate of collisions in Los Banos. The figures below and on the following page show potential improvements to improve traffic safety and reduce vehicle congestion on

Pacheco Boulevard. In addition, strategies to improve traffic flow and safety are presented on pages 4 through 9.



Improvements to Increase Traffic Flow and Safety

MATCHLINE SEE PREVIOUS PAGE



MATCHLINE SEE BELOW LEFT

MATCH LINE SEE ABOVE RIGHT



MATCH LINE SEE BELOW LEFT

MATCHLINE SEE ABOVE RIGHT



1/8 mi 1/4 mi

- Lighting (Near/Mid-Term)
- - - Lighting (Future - Once Developed)
- ▭ Driveway and/or Parking Lot Consolidation
- New Raised Median to Restrict Left Turns
- ▭ New Pedestrian Refuge Island
- - - Removal of Street Parking Near Intersection

Streetscape and Aesthetics: Enhance Parks

Parks are a valuable community amenity because they provide gathering spaces for passive and active recreation, play, and greening. Enhancing existing parks and creating new parks along Pacheco Boulevard will help cultivate an attractive and vibrant corridor, providing destinations for community members to visit. The figures below show examples of enhanced or new parks along the corridor.

I STREET PARK PLAZA CONCEPT

A new park plaza was identified for Downtwon Los Banos at the intersection of Pacheco Boulevard and I Street (image below). A spatial opportunity was created by realigning the existing wide, acute-angled intersection to form a T-shaped intersection. This realignment makes the intersection safer for vehicles and pedestrians.

This new park plaza (approximately 1,820 square feet) is anchored by two large oak trees at either corner and features iconic Downtown gateway signage, seating, and a small bosque of flowering evergreen trees. Improvements were also identified adjacent to the park plaza, including a connecting sidewalk with buffered planting, new street trees, a new high visibility crosswalk, and nine new parallel parking spaces along I Street. The new park plaza and additional streetscape improvements will create a shaded, pleasant, and safe community asset.

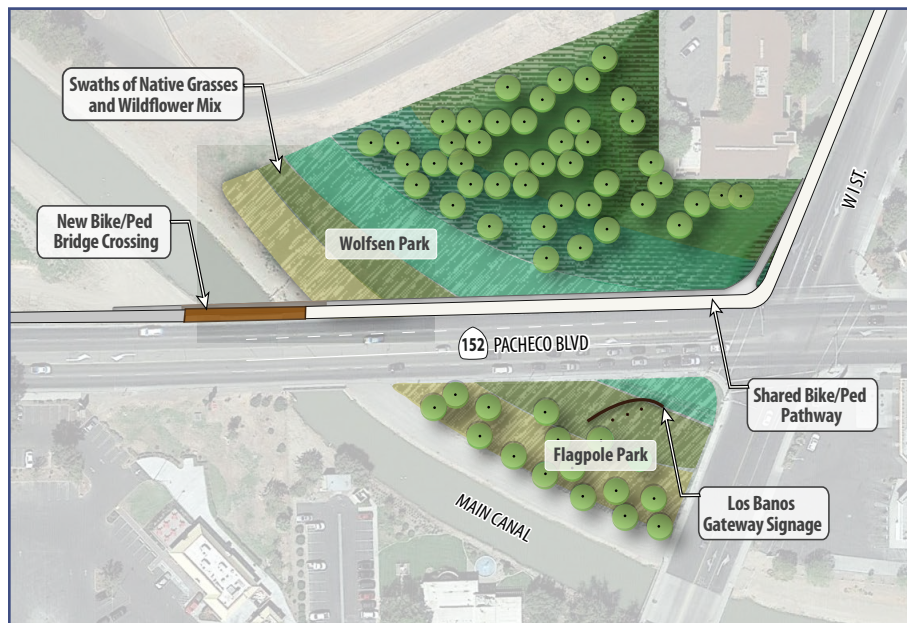


Streetscape and Aesthetics: Enhance Parks

WOLFSEN PARK / FLAGPOLE PARK CONCEPT

Wolsen Park (approximately 121,000 square feet) and Flagpole Park (approximately 29,000 square feet) are located at the intersection of West I Street and Pacheco Boulevard. Because these parks are located at this transitional point, there is an opportunity to enhance and beautify these parks to create a visual landmark for people entering Los Banos by car or foot. Attractive new gateway signage in Flagpole Park will also greet visitors.

The landscape design of Wolsen Park and Flagpole Park unites these two parks with planting bands of color, which mimic the curvature of the adjacent main canal. Planting bands will be a mixture of native shrubs and grasses for low maintenance and low water use. These park landscapes are backdropped with semi-deciduous trees along the park edges in order to maintain visual site lines to the Los Banos Downtown signage as well as West I Street and Pacheco Boulevard. Additional streetscape improvements include a new shared ped/bike pathway and bridge crossing along the northern edge of Pacheco Boulevard.



PACHECO PARK

Pacheco Park could be extended toward Pacheco Boulevard by removing the frontage road and adding landscaping near the street. A new parking lot could be added to the east end of the park.



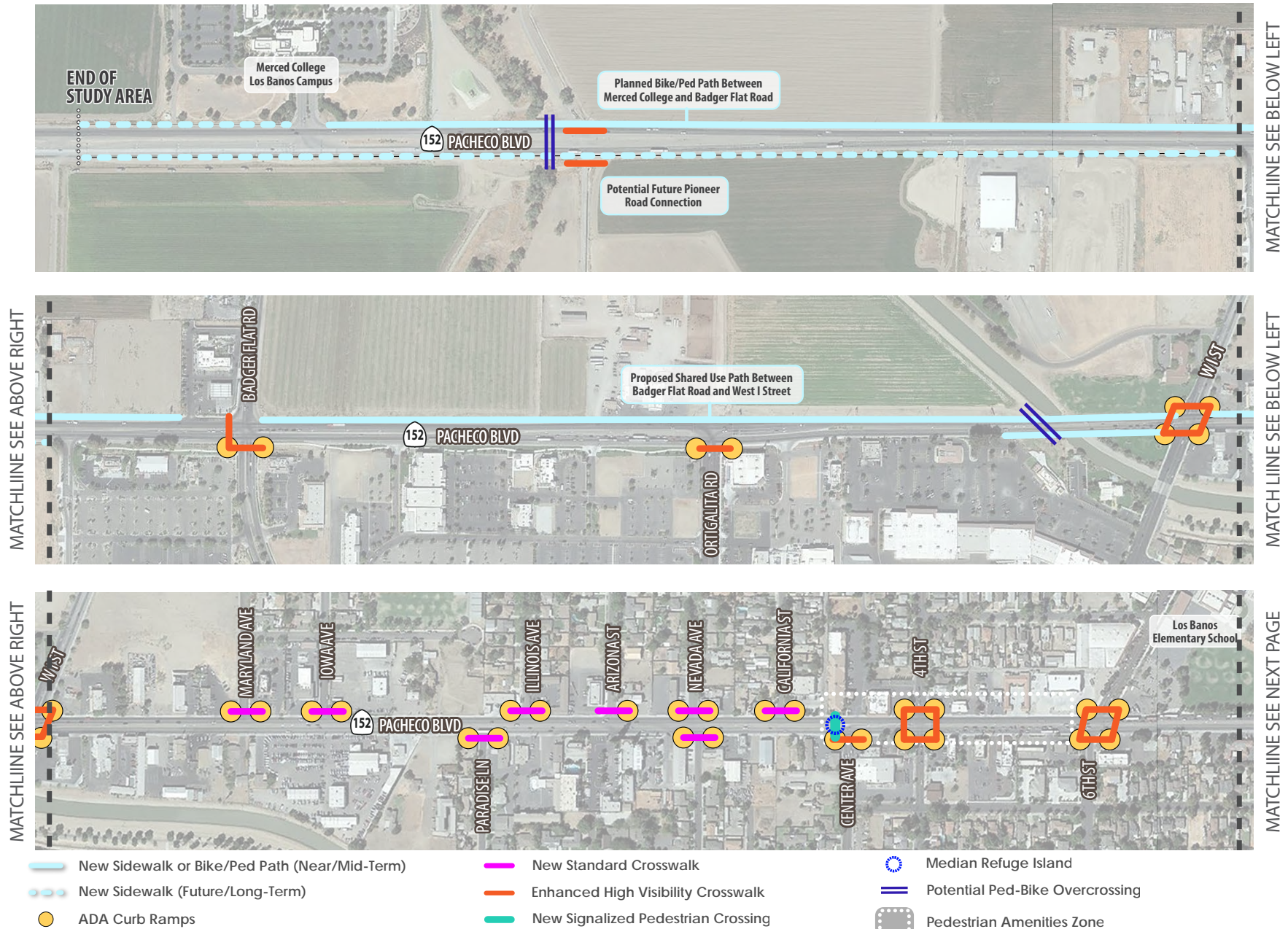
Below is a recent concept for Pacheco Park. The City is currently seeking community input while working on an update to the Parks Master Plan. The plan will include strategies for improving Pacheco Park by providing additional recreational amenities and community space.



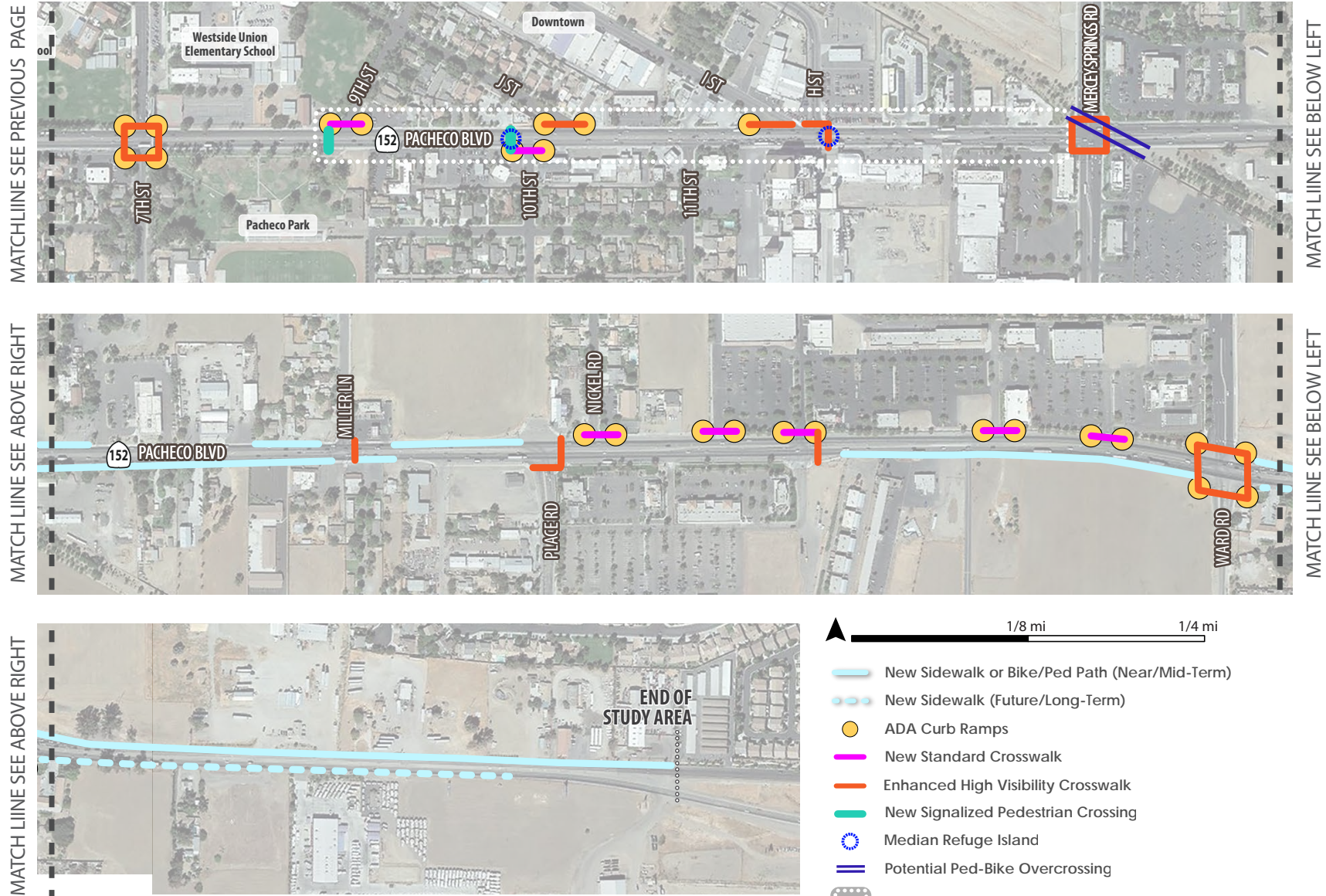
Pedestrian Improvements

Many community members have mentioned a desire for safer walking conditions along and crossing Pacheco Boulevard. The figures below and on the following page show

potential improvements to improve safety and comfort for people walking. See page 9 for examples of some of these types of pedestrian-oriented enhancements.



Pedestrian Improvements



Pedestrian Improvements: Crossings



Near/Mid-Term Pedestrian Crossing Improvements (West to East)

This table shows potential improvements to increase safety and comfort for pedestrians traveling along and across SR-152/Pacheco Boulevard, while also balancing the needs of all road users including motorists. Example images of these types of improvements are shown on the next page.

Intersection Location	ADA Curb Ramps (# of ramps)	New Crosswalk(s) Along Pacheco Blvd (# of crosswalks)	Enhanced Existing Crosswalks (# of legs)	New Signalized Pedestrian Crossing	Other
Badger Flat Road	2		2		Additional crossings across Pacheco if bike/ped path is extended east past Badger Flat to West I Street.
Ortigalita Road	2		1		Additional crossings across Pacheco if bike/ped path is extended east past Badger Flat to West I Street.
West I Street	4		3		Additional crossings across Pacheco if bike/ped path extension is built – see concept shown in next section
Maryland Avenue	2	1			
Iowa Avenue	2	1			
Paradise Lane	2	1			
Illinois Avenue	2	1			
Arizona Street	1	1			
Nevada Avenue	2	2			
California Street	2	1			
Center Avenue	3	1			
4 th Street	4		4		

Intersection Location	ADA Curb Ramps (# of ramps)	New Crosswalk(s) Along Pacheco Blvd (# of crosswalks)	Enhanced Existing Crosswalks (# of legs)	New Signalized Pedestrian Crossing	Other
6th Street	4		4		
7th Street	4		4		
9th Street	2	1			
10 th Street	2	1			
J Street	2		1		
I Street	X		1		
H Street			1		
Mercey Springs Road (SR-165)			4		Potential future enhanced bike/ped crossings – see concept in next section
Miller Lane			1		
Place Road			2		
Nickel Road	2	1			
Shopping Center Parking Lot Driveways (Four Total)	8	4			
Ward Road	4		4		

Pedestrian Improvements: Examples of Potential Improvements

New Signalized Pedestrian Crossings



Enhanced Pedestrian Crossings



ADA Curb Ramps



Bike/Ped Overcrossing



New Sidewalks



Missing sidewalks on east side of Pacheco Boulevard

New sidewalk on west side of Pacheco Boulevard



Existing sidewalk on Pacheco Boulevard with accessibility concerns



Wider sidewalks on Badger Flat Road

Bicycle Improvements

Bike routes are important in many ways, such as providing safer conditions for school children and college students wishing to bike to school, as well as supporting bicycling as healthy recreation. They are also a low-cost travel option for people who cannot afford a personal vehicle and/or for whom public transit is inefficient.

The table to the right lists bikeways recommended in the Los Banos Bicycle-Pedestrian Plan (BPP) that either cross SR-152/Pacheco Boulevard or run adjacent to it. The table provides context for the bicycle concepts presented on pages 24 through 31. The figure on the next page shows the BPP's proposed bicycle network.

Types of Bikeways



Bike/Ped Path



Cycle Track



Neighborhood Greenway



Bike Lane

Relevant Bikeways Proposed in the Bicycle-Pedestrian Plan (BPP) - West to East

Highlighted bikeway improvements overlap with the concepts shown on pages 24 through 31. Unhighlighted bikeways are routes that cross or abut Pacheco Boulevard.

# (IN BPMP)	Bikeway Type	Project Title
I1	Class 1 – Bike/Ped Path	Los Banos Creek from Henry Miller Road to Pioneer Road
A1	Class 1 – Bike/Ped Path	PSR-152/Pacheco Boulevard from Badger Flat Road to Merced College Campus Drive
L1	Class 1 – Bike/Ped Path	Stonecreek Drive from Pacheco Boulevard/State Route 152 to Los Banos Creek
G1	Class 1 – Bike/Ped Path	Badger Flat Road from the Rail Trail to Pioneer Road
U1	Class 1 – Bike/Ped Path	Pacheco Boulevard/State Route 152 from I Street to Badger Flat Road
D1	Class 1 – Bike/Ped Path	CCID Trail from West I Street to Los Banos Creek
T1	Class 1 – Bike/Ped Path	I Street from Pacheco Boulevard/State Route 152 to 2nd Street
C2	Class 2 – Bike Lane	Center Avenue from Pacheco Boulevard/State Route 152 to Pioneer Road
C3	Class 3 – Bike Route	Fourth Street from H Street to Pacheco Boulevard/State Route 152
H3	Class 3 – Bike Route	Sixth Street from H Street to Page Avenue
B2	Class 2 – Bike Lane	Eleventh Street from Pacheco Boulevard/State Route 152 to Pioneer Road
B1	Class 1 – Shared Use Path	Rail Trail at Mercey Springs Road/State Route 165 and Pacheco Boulevard/State Route 152 to Place Road
F2	Class 2 – Bike Lane	Place Road from Pacheco Boulevard/State Route 152 to Scripps Drive
F1	Class 1 – Shared Use Path	Ward Road from Pioneer Road to Pacheco Boulevard/State Route 152

LOS BANOS
PACHECO BOULEVARD
PIONEER ROAD
COMPLETE STREETS

Railroad

Creek

Canal

Proposed Class 1

Proposed Class 2

Proposed Class 3

Existing Class 1

Existing Class 2

Existing Class 3

Parks

Schools

Airport

Los Banos City Limits

City of Los Banos
At the Crossroads of California

MCAAG
MERCED COUNTY ASSOCIATION OF GOVERNMENTS

N
E
S
W

0 0.25 0.5 1 Miles

11

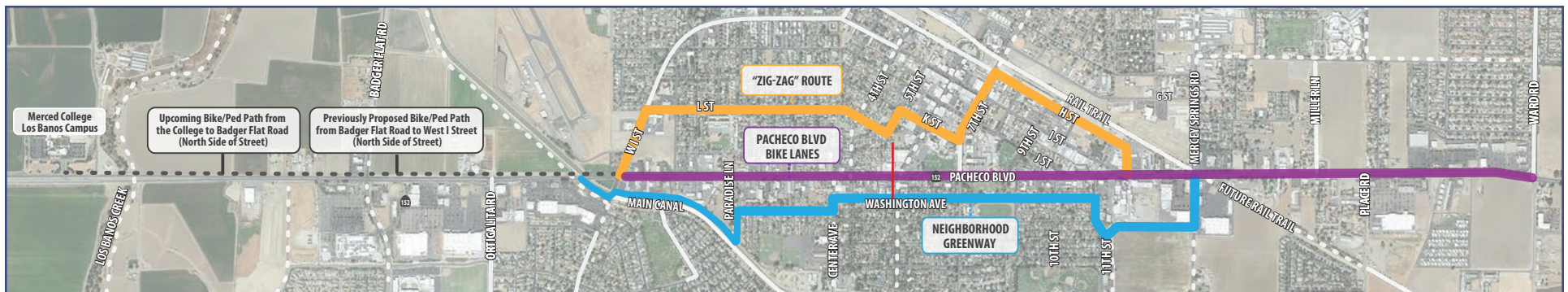
Bicycle Improvements: East-West Routes

Potential East-West Bike Routes

East-west bicycle routes will provide important connections to key areas of Los Banos like the College, residential neighborhoods, and major job and shopping centers.

The map below shows three potential east-west bicycle routes between West I Street and Mercey Springs Road: a near-term concept ("Zig-Zag" Route), medium-term concept (Neighborhood Greenway), and long-term concept (Pacheco Boulevard bike

lanes). All routes connect to a potential pedestrian/bicycle path traveling west from West I Street, which is proposed in the City's Bicycle-Pedestrian Plan. To the east, the near- and medium-term concepts connect to the Rail Trail and to potential future bike lanes or paths east of Mercey Springs Road.



Bicycle Improvements: East-West Routes

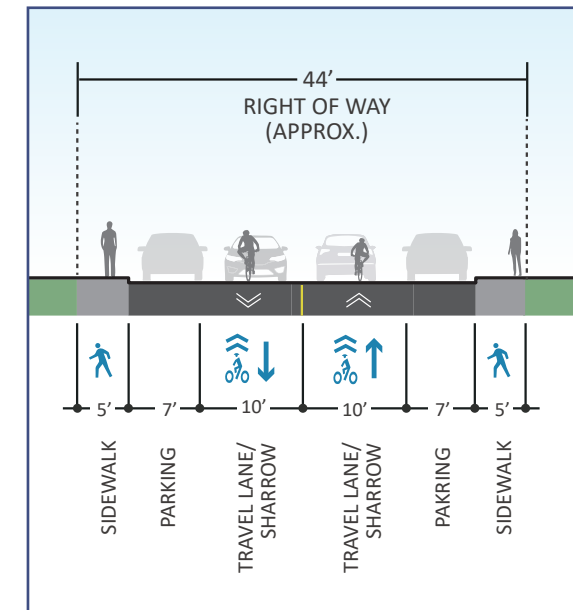
"ZIG-ZAG" ROUTE (NEAR-TERM)

This route leads to Downtown Los Banos and the Rail Trail by using roadways north of Pacheco Boulevard. The route includes roadways adjacent to Westside Union and Los Banos Elementary Schools. It was the second-most-preferred option by workshop and survey participants, and it is considered a near-term improvement.



- Proposed Class I Ped/Bike Path
- Proposed Class III Bike Route
- Existing Class II Bike Lane
- Existing Bikeways
- Bikeways Proposed in the Bicycle-Pedestrian Plan

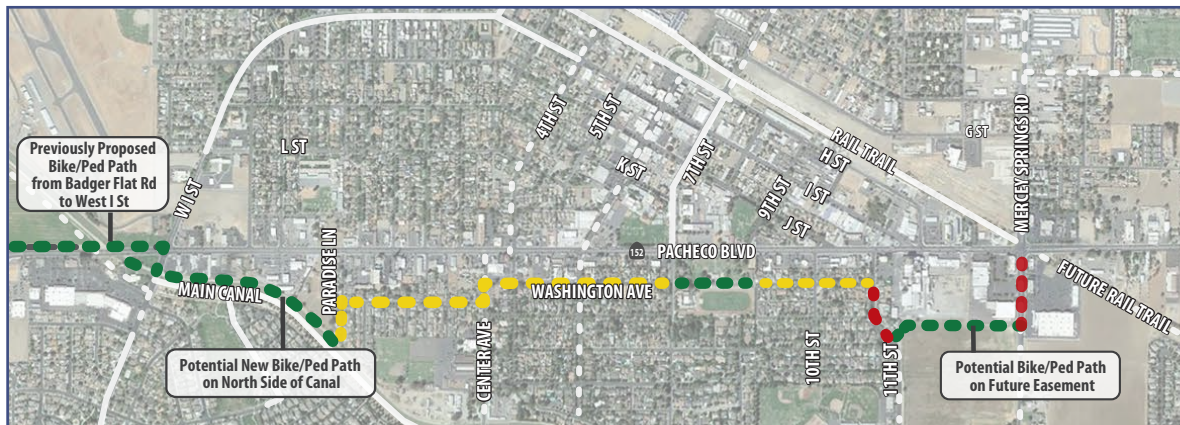
L Street



Bicycle Improvements: East-West Routes

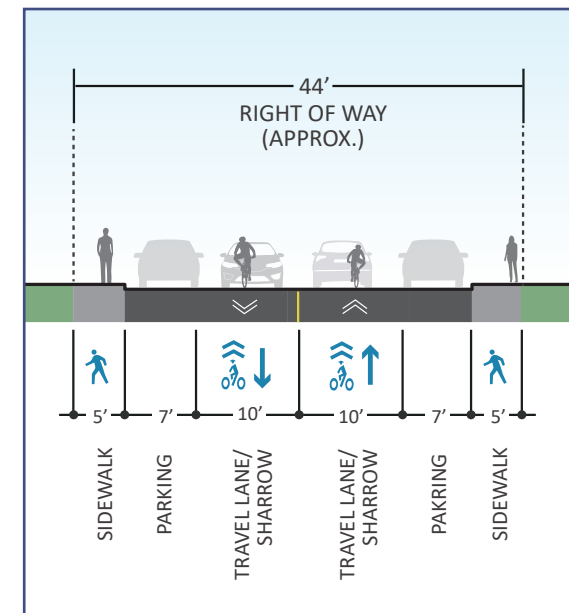
NEIGHBORHOOD GREENWAY (MEDIUM-TERM)

This route utilizes a potential pathway along the Canal Path, residential streets to the south of Pacheco Boulevard, and a potential bike/ped path between 11th Street and Mercey Springs Road. It was the second-most preferred option by workshop and survey participants, and it is considered a medium-term improvement.



- Proposed Class I Ped/Bike Path
- Proposed Class II Bike Lane
- Proposed Class III Bike Route
- Existing Bikeways
- Bikeways Proposed in the Bicycle-Pedestrian Plan

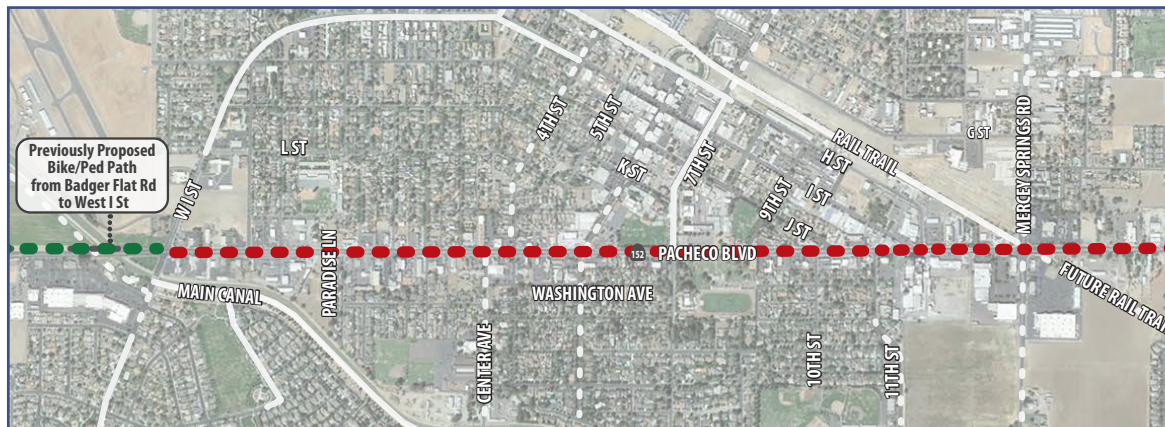
Washington Avenue



Bicycle Improvements: East-West Routes

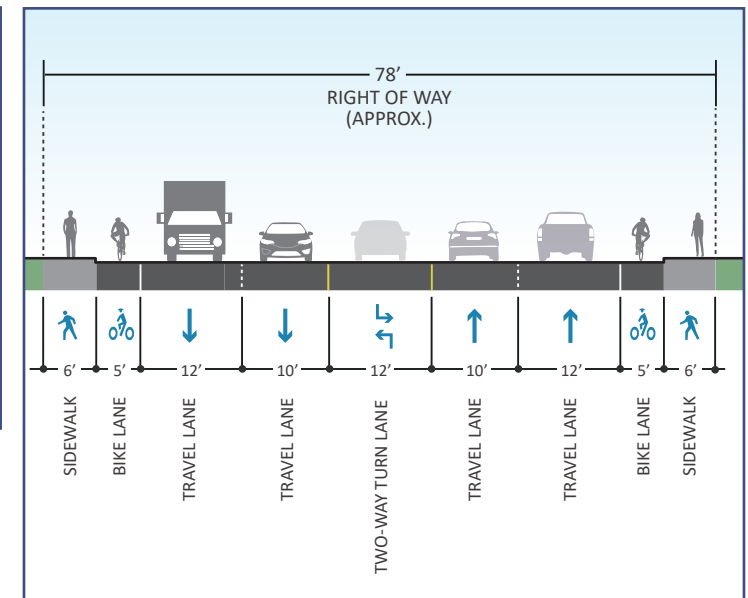
PACHECO BOULEVARD BIKE LANES (LONG-TERM)

This option would add on-street bicycle lanes along SR-152/Pacheco Boulevard in the roadway, which would require reconfiguration of the roadway and shoulders to accommodate bicycles. It was the third-most preferred option by workshop and survey participants, and it is considered a long-term improvement.



- ● ● ● ● Proposed Class I Ped/Bike Path
- ● ● ● ● Proposed Class II Bike Lane
- Existing Bikeways
- Bikeways Proposed in the Bicycle-Pedestrian Plan

Typical Right of Way



Bicycle Improvements: North-South Routes

The following pages show three potential North-South Bicycle Routes crossing Pacheco Boulevard.

LOS BANOS CREEK TRAIL (MEDIUM TO LONG TERM)

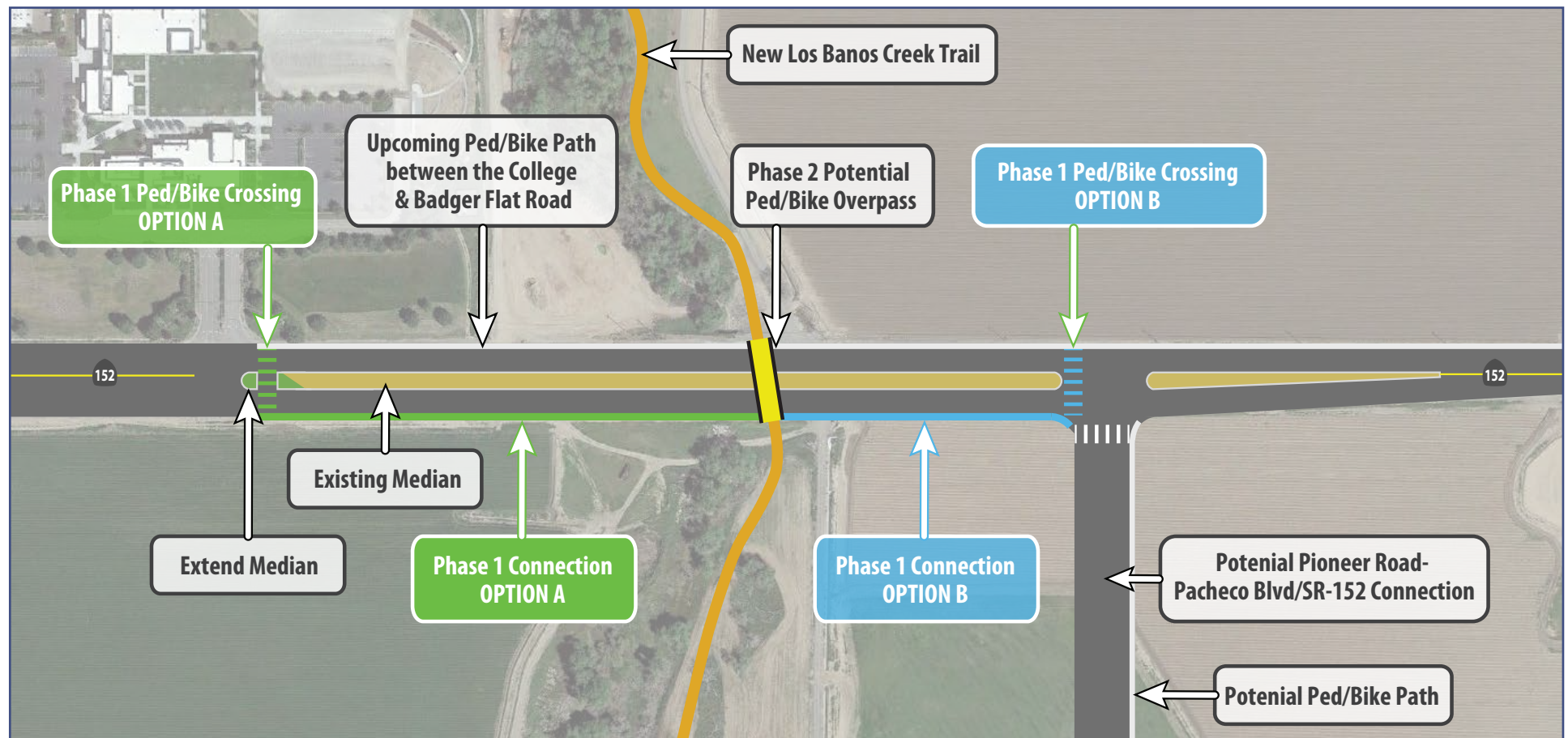
This concept shows how a future trail along Los Banos Creek could be connected on either side of SR-152.

Phase 1 includes two options:

Option 1 is a bike/ped crossing at the existing intersection at the College. It would receive additional enhancements such as bike/ped signals and revised signal phases.

Option 2 is an enhanced bike/ped crossing at a potential new roadway leading south to Pioneer Road.

Phase 2 (long-term) is a bike/ped bridge spanning SR-152.



Bicycle Improvements: North-South Routes

WEST I STREET/CANAL PATH (NEAR-MEDIUM TERM)

This concept provides connections between the existing Main Canal bike/ped path, SR-152/Pacheco Boulevard, and West I Street. Buffered bike lanes on either side of West I Street connect to existing bike lanes, as shown in the key map to the right. There is also a new crossing for pedestrians and

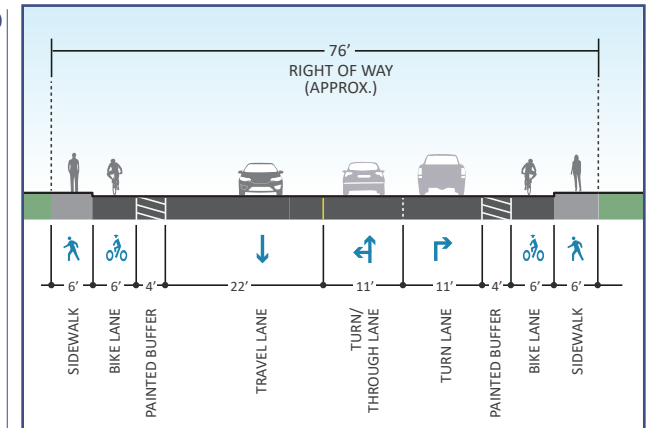
bicyclists across West I Street at the Main Canal that would include a rapid flashing beacon. Enhanced crosswalks at the intersection of West I Street and Pacheco Boulevard improve motorists' visibility of pedestrian crossings



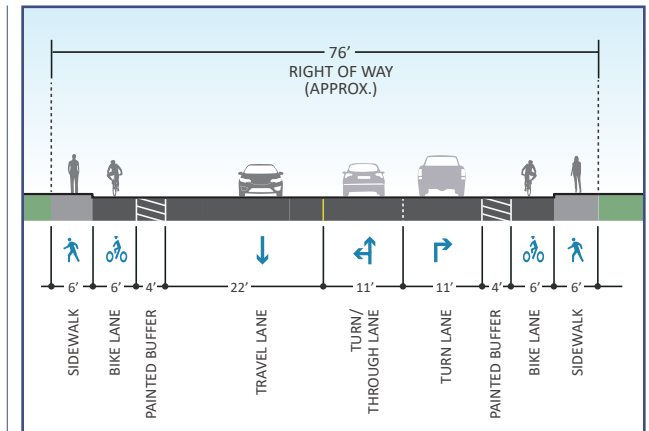
Phase 1 - Buffered Bike Lanes



Existing



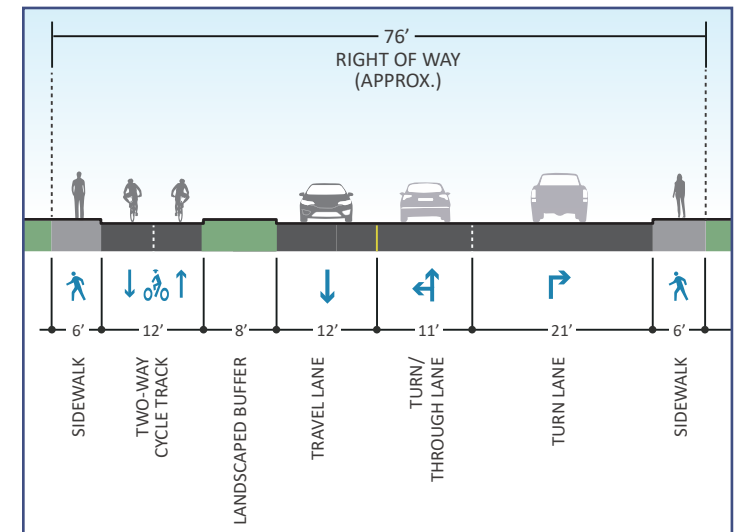
Phase 1



Bicycle Improvements: North-South Routes

WEST I STREET/CANAL PATH (NEAR-MEDIUM TERM)

Phase 2 - Two Way Cycle Track



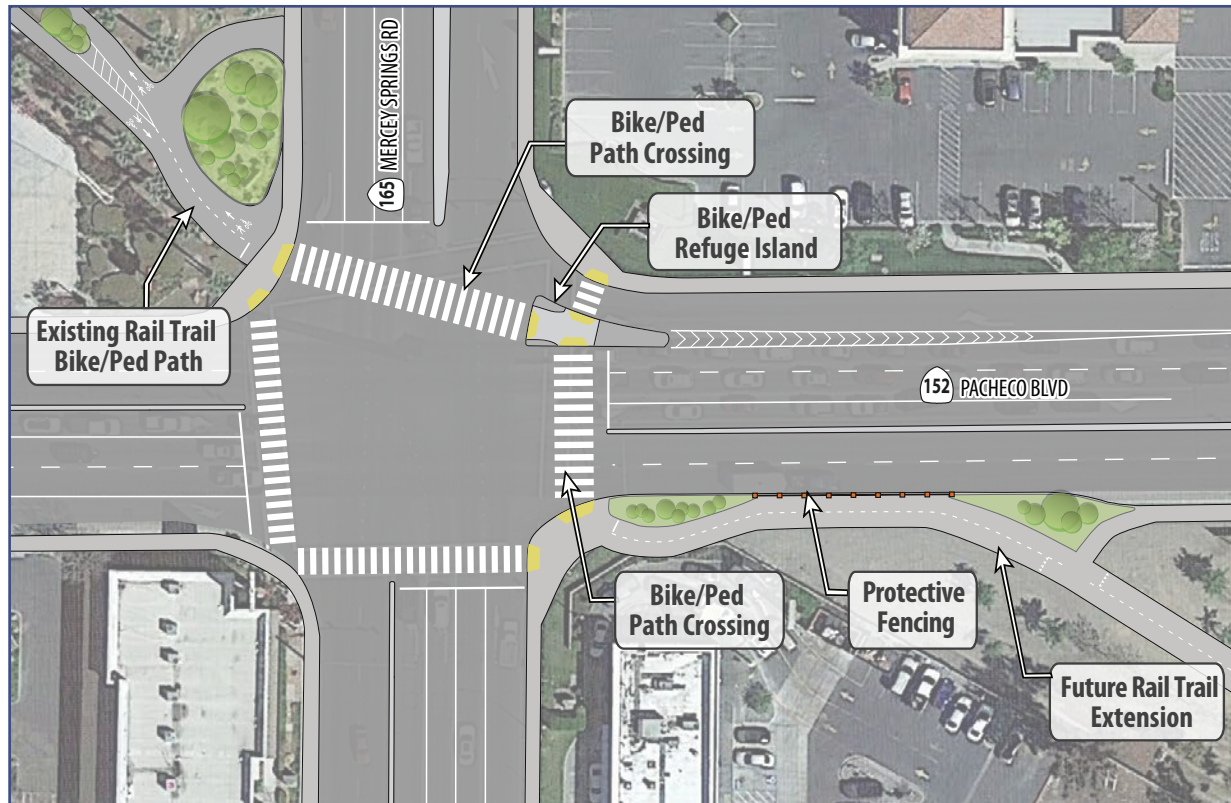
Bicycle Improvements: North-South Routes

RAIL TRAIL AT MERCY SPRINGS ROAD (MEDIUM-TERM)

This concept provides a connection from the existing Rail Trail at the northwest corner of the Mercy Springs Road/Pacheco Boulevard intersection to a new paved segment of the Rail Trail to the southeast. The combined crossing for people walking and bicycling across either side of the intersection is shortened by a new “pork chop” refuge island that acts as a refuge and “waiting area”. A curb extension on the south side

of Pacheco Boulevard provides added room to accommodate a bike/ped path. There is no loss of travel lanes from the roadway’s existing configuration.

A long-range future project could include a pedestrian/bicycle bridge placed diagonally across the intersection, which would provide a direct and completely protected crossing.



Existing Conditions

